



# PROMINENCE

*Healthcare, Smarter.*

# Metric Management

You have many different definitions and don't have a way to standardize, approve, publish and maintain them across the organization. You want to accelerate the process of defining common terminology by leaning on others with experience.

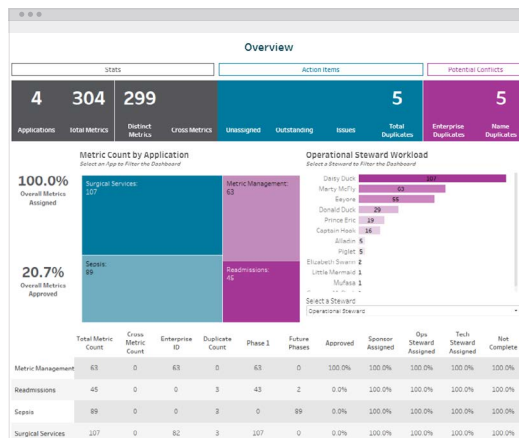
Prominence's Metric Management application was designed with these challenges (and more!) in mind.

We source the application with a carefully crafted metric workbook, containing critical definition and metadata detail for each metric contained within a given application.

We support functional workflows for a variety of roles integral to the success of metric sharing and maintenance, including approvers, SMEs, and PMs.

We shed light on potential issues, such as name duplicates, unassigned metrics, or metrics with missing information, and suggest next steps to resolve them.

We make it easy to understand not just the current use but also how best to leverage that metric for future projects.



**Metric Definitions**

Select an Application: [Dropdown]  
 Select a Domain: [Dropdown]  
 Select a Metric: [Dropdown]

**Metric Name**: Index Admission  
**Calculation**: Count of Index Admissions. The Index Admission is the patient's initial hospital stay. It includes all inpatient admission events that have an inpatient patient class and are not included in the exclusion population below. Admission events are defined.

**Ownership Details**

Sponsor	Metric Domain	Operational Steward	Technical Steward	Definition Status
Moby Mouse	Hospital Operations	Donald Duck	Henry Pig	Unspecified

**Miscellaneous**

Application	Metric Application Tab	Metric Application Metric T	Metric Timing	Metric Application Scope	Metric Usage Count
Null, Resmissions	Unspecified	Measure	Unspecified	Phase 1	1

**Technical Definition**

Metric Data Source	Metric All Source Table Fields	Metric Source Value	Metric SQL Logic
Clarify	V_PAT_ADT_LOCATION_DT_EVENT_TYPE_C	EVENT_TYPE_C = 'Adm'.	Unspecified

**Configuration Details**

Metric All Conf	Metric All Enterprise Fields	Metric Enter	Metric Application All ID	Metric Application Target	Metric Appl	Metric Application Visualizat
Unspecified	Unspecified	Null	Unspecified	Unspecified	Unspecified	Unspecified

**History Details**

Metric Name	History Metric Changes in Val	History Metric Changes in C	History Metric Changes in Value	History Metric Changes in Label
Index Admission	Calculation	Null	Null	Enterprise Metric
	Complexity	Null	Null	Application Metric
	Configuration Variable	Null	Null	Enterprise Metric



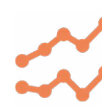
**Accelerate**  
Standardization.  
Install a glossary  
in 30 days.



**Share** metrics  
across analytic  
applications,  
analytical tools,  
visualizations  
and repositories  
in an easy and  
concise manner.



**Enable**  
collaboration,  
communication  
and  
management of  
your glossary  
and its  
metadata.



**Increase**  
transparency of  
metric  
ownership and  
issue resolution.



# Proven ROI

\$400MM+

## Documented ROI

In the hundreds of successful implementations with organizations across the country, Prominence has documented over \$400MM of ROI to date. It's one thing for someone to say that their solutions save time and money, but another thing to be able to back it up with a proven track record of success and hard ROI numbers.

TWO

## HIMSS Davies & Truven Awards

HiMSS Davies and Truven awards are considered the pinnacle of technology in healthcare IT. Prominence has won not one, but two, of each of these awards while working with their customers. Our people and our technologies have a very real and very positive impact on healthcare across the nation, every day.

18+

## Best Places to Work Awards

Prominence's culture speaks for itself. Our clear and simple core values, KLAS-leading rankings, and the breadth of staff's experience all come together to produce an unparalleled experience for our customers. There's a reason that 100% of our customers have come back to us for additional engagements, and why we've scored a perfect 10.0 in KLAS for not nickel-and-diming, and we'd love the opportunity to show you why.

7/10

## Best Hospitals in the Nation

The best hospitals, healthcare organizations, and academic centers rely on Prominence to provide cutting-edge solutions, advice, and expertise. Our teams have experience in every aspect of the provider, payer, academic, and administrative spaces, and we're able to provide our services across the spectrum of healthcare, instead of just a single domain area.



# Prominence Starter Kits

## Executive

Executive Scorecard  
Population Health  
Labor & Productivity  
Patient Experience & Satisfaction  
ACO Scorecard  
Readmission Review  
Discharge Summary

## Access & Revenue

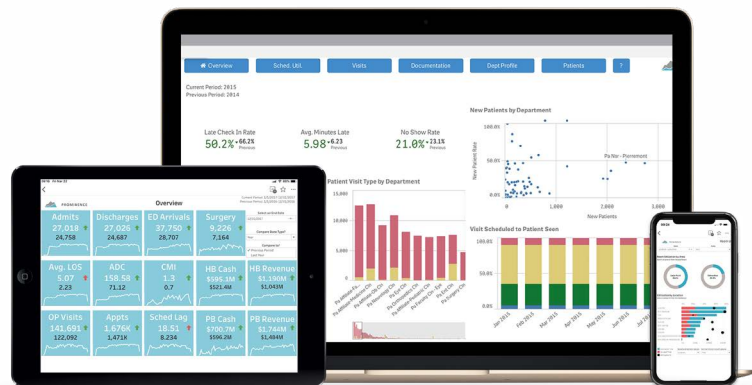
Professional Revenue Cycle Management  
Hospital Revenue Cycle Management  
Finance KPI Dashboard  
Case Management  
Schedule Utilization  
Payer Performance  
Bundled Payments  
Workqueue Management

## Performance & Efficiency

Governance Dashboard  
Metric Library & Management  
Automated Database Validation  
Reporting Toolbox

## Academic

Resident & Fellow Management



## Clinical

Surgical Services  
Emergency Medicine  
Imaging & Radiology  
Sepsis Monitoring & Tracking  
Physician Scorecard  
Nursing Scorecard  
Clinical Documentation Improvement  
OPPE / FPPE

## Research

De-identified Cohort Creation & Characterization  
Grants, Proposals, & Awards  
Custom Database Visualization

## Quality

Quality Measures  
Core Measures  
Hospital Acquired Infections / Conditions