

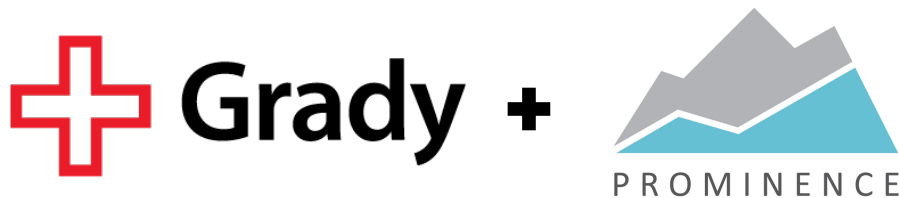
Grady Health: Consolidation of BI Tools to Tableau

How Grady Converted Multiple Analytics Reports from Qlik to Tableau to Streamline Reporting

Grady Health System undertook a strategic initiative to revolutionize its data reporting landscape, by transitioning from Qlik to Tableau while integrating Informatica to streamline operations and enhance data integrity. This comprehensive endeavor aimed to consolidate tools, reduce costs, and improve the user experience by ultimately fostering trust in data-driven decision-making.

Amidst the evolving healthcare landscape, characterized by increasing demands for accurate, timely insights, Grady recognized the critical need to consolidate disparate data sources, streamline reporting processes, and empower stakeholders with actionable intelligence. By partnering with Prominence, a trusted external partner renowned for its expertise in healthcare data analytics, Grady embarked on a journey to not only meet these challenges head-on but to exceed expectations and redefine standards of excellence.

From the conversion of 9 dashboards across multiple domains to Tableau, to the incorporation of an average of 13 enhancements to each application, this project was meticulously crafted to deliver maximum value and drive operational efficiency. By aligning with organizational goals, prioritizing knowledge transfer, and defining a comprehensive adoption strategy, Grady not only achieved its immediate objectives but positioned itself for sustained success in the dynamic healthcare landscape.



Why Choose an External Partner?

By leveraging Prominence's expertise and resources, Grady accelerated the conversion process, capitalized on best practices, and ensured operational continuity throughout the transition. They chose an external partner due to:

Time Constraints: Enlisting Prominence enabled Grady to meet strict deadlines, ensuring operational continuity and timely completion of the project.

Knowledge Constraints: Leveraging Prominence's expertise facilitated efficient knowledge transfer, enabling Grady to navigate the complexities of the transition with confidence.

Reliability: Partnering with Prominence provided Grady with a dependable team, ensuring smooth execution and project success.



info@prominenceadvisors.com

Contact our team today to get started **doing more with your data!**



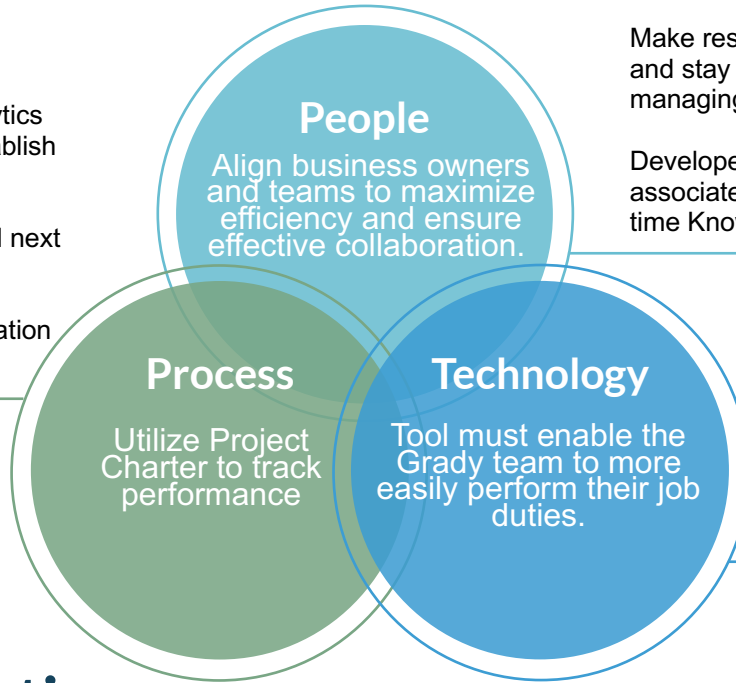
Ensuring Partner Alignment + Project Success

How can you align expectation to maximize efficiency and success through this process?

Align conversion efforts with Analytics and Informatica integration to establish data stewardship.

Define technical requirements and next steps for data extraction.

Share all relevant build documentation for existing Qlik applications.



Make resources available to collaborate and stay in sync with changes while managing Grady business owners.

Developers and Super Users to complete associated training for contextual real time Knowledge Transfer.

Catalogue and prioritize existing Qlik applications to prepare for conversion.

Project Objectives

Driven by the imperative to enhance reporting capabilities and rebuild trust in data integrity, Grady Hospital undertook a comprehensive initiative to convert from Qlik to Tableau, supported by the integration of Informatica for robust glossary management. The project's scope included consolidating dashboards, enhancing functionality, and ensuring seamless transition, all facilitated by the expertise of external partner Prominence.



Consolidate & Reduce Cost

Establish a single source of truth for BI tools ahead of Qlik contract renewal



Integrate Tableau & Informatica

Leverage a robust, certified glossary that provides a source of metric definition truth and reduce redundancy across the organization



Streamline User Experience

Remove confusion and duplicity by engaging stakeholders and incorporating feedback



info@prominenceadvisors.com

Contact our team today to get started **doing more with your data!**



Data Governance Requirements & Results

In conjunction with the BI tool conversion, Grady Health prioritized building trust in their reporting through the implementation of Informatica's Enterprise Glossaries. This allowed users to:

Answer their own questions

Consume information consistently with the right background

Apply what they are seeing in the right manner

Data Governance Glossary,
Catalog and Quality



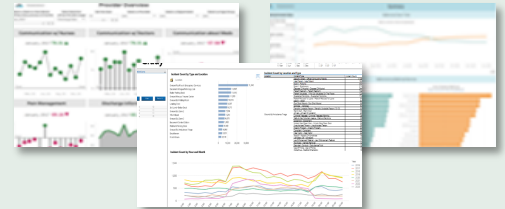
Data Visualization and
Consumption



Services to Implement &
Convert from Qlik to
Tableau



Informatica



Project Results: Conversion & Enhancement

Grady Health's strategic initiative to revolutionize its data reporting landscape marked a significant milestone in its journey towards operational excellence. By transitioning from Qlik to Tableau and integrating Informatica, Grady sought to streamline operations, enhance data integrity, and empower stakeholders with actionable insights. Through collaboration with Prominence, a trusted external partner, Grady achieved:

9

Applications Across Multiple Domains
Converted

320+

Total Metrics in Informatica Used for
Tableau Glossaries

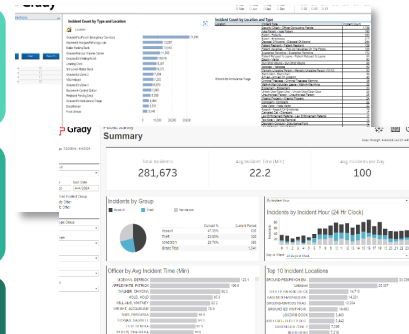
13

Average Enhancements per Application

Business Owners have Actionable &
Functioning Dashboards to
Complete Job Duties

Eliminated Manual
Data Intervention

Standardized UI Templates & Branding



Move Mountains Today

Whether you are looking to convert or consolidate BI tools, build a strong data governance foundation, or take another step toward data-driven decision-making, our team is ready to help you make healthcare smarter. Reach out to our team today to get started:



info@prominenceadvisors.com

Contact our team today to get
started **doing more with your data!**



PROMINENCE

Healthcare. Smarter.